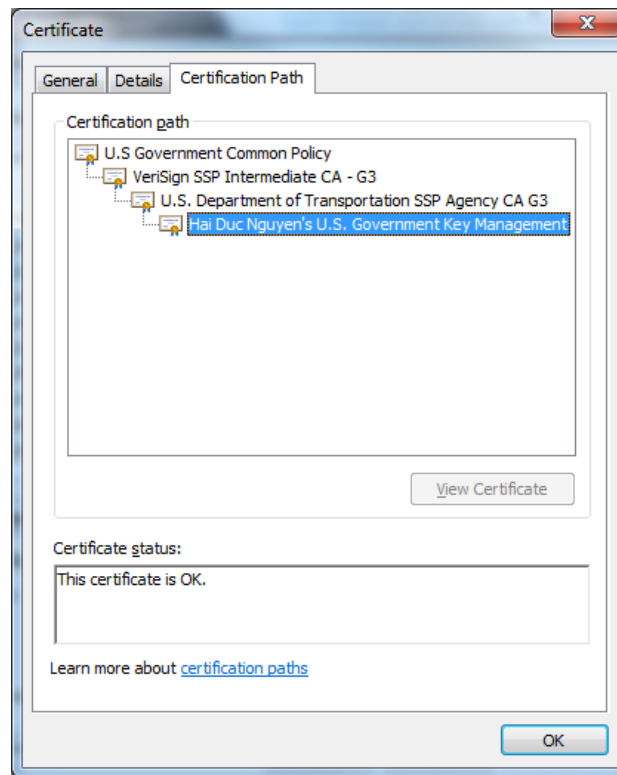


Export Root and Intermediate Certs from PIV via IE

- Open Internet Explorer
- Click **Tools > Internet Options** on the menu bar.
- Click the **Content** tab
- Click the **Certificates** button
- Locate your certificate in the list and double-click it
- Select the **Certificate Path** tab

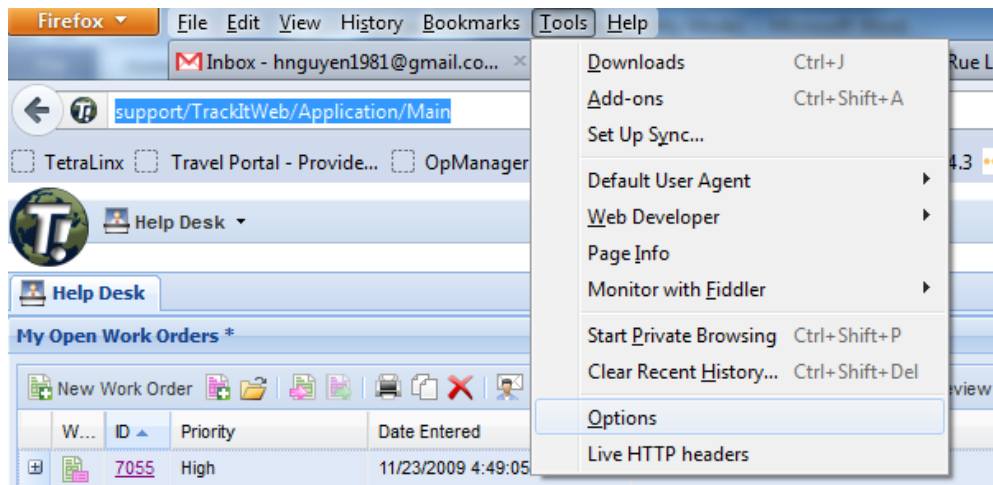


- Select the **U.S. Government Common Policy** certificate
- Click **View Certificate** button
- Select the **Details** tab
- Click the **Copy to File...** button
- The **Welcome to the Certificate Export Wizard** will appear
- Click **Next**
- Select **DER encoded binary X.509 (.CER)** option
- Click **Next**
- Click **Browse** and select a directory and provide a name for the certificate.
- Click **Save**
- Click **Next** and **Finish**
- Repeat the previous steps to export the intermediate certificates (**Verisign SSP Intermediate CA – G3** and **U.S. Department of Transportation SSP Agency CA G3**)

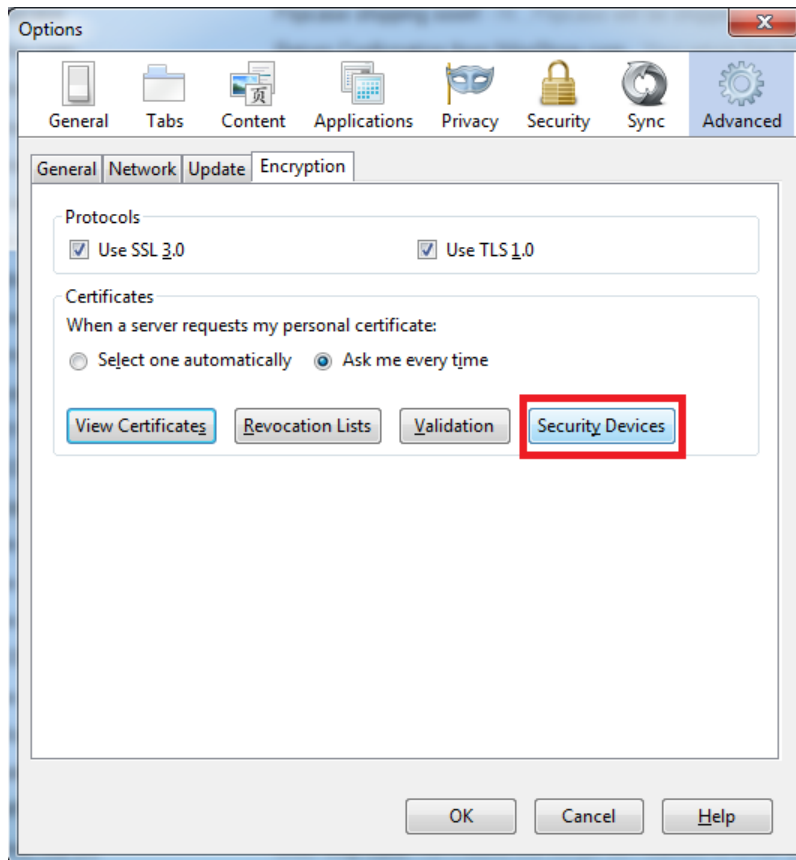
How to configure ActivClient with Firefox

- Install the latest version of ActivClient

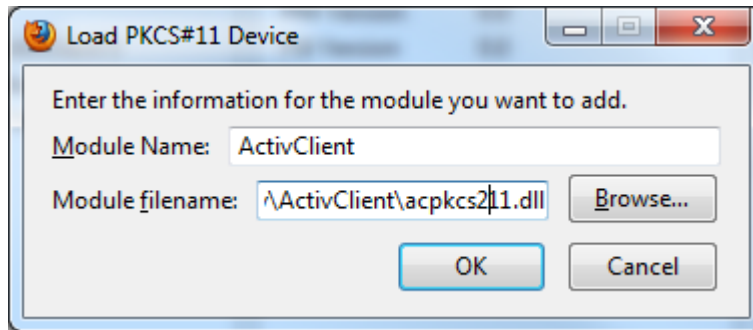
- In Firefox, click **Tools > Options** on the menu bar.



- Select **Advanced** and click the **Encryption** tab. Click the **Security Devices** button.



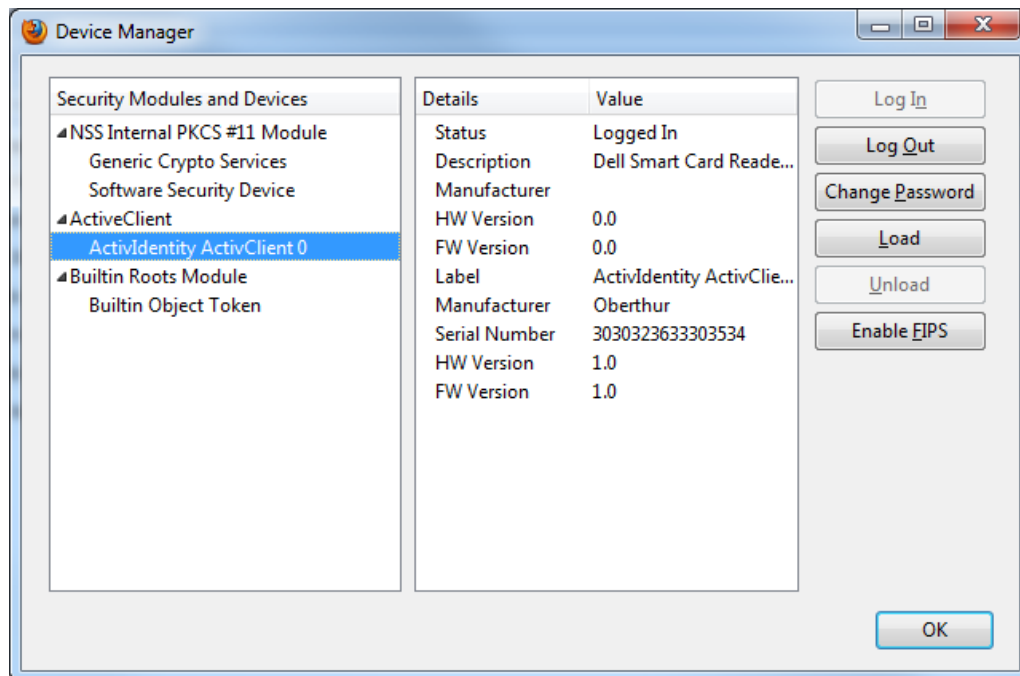
- Click the **Load** button.



- Enter "**ActivClient**" for Module Name.
- Click the Browse button and navigate to the 32-bit version of the ActivClient acpkcs211.dll file in the "**C:\Program Files (x86)\ActivIdentity\ActivClient**" folder and click Open.

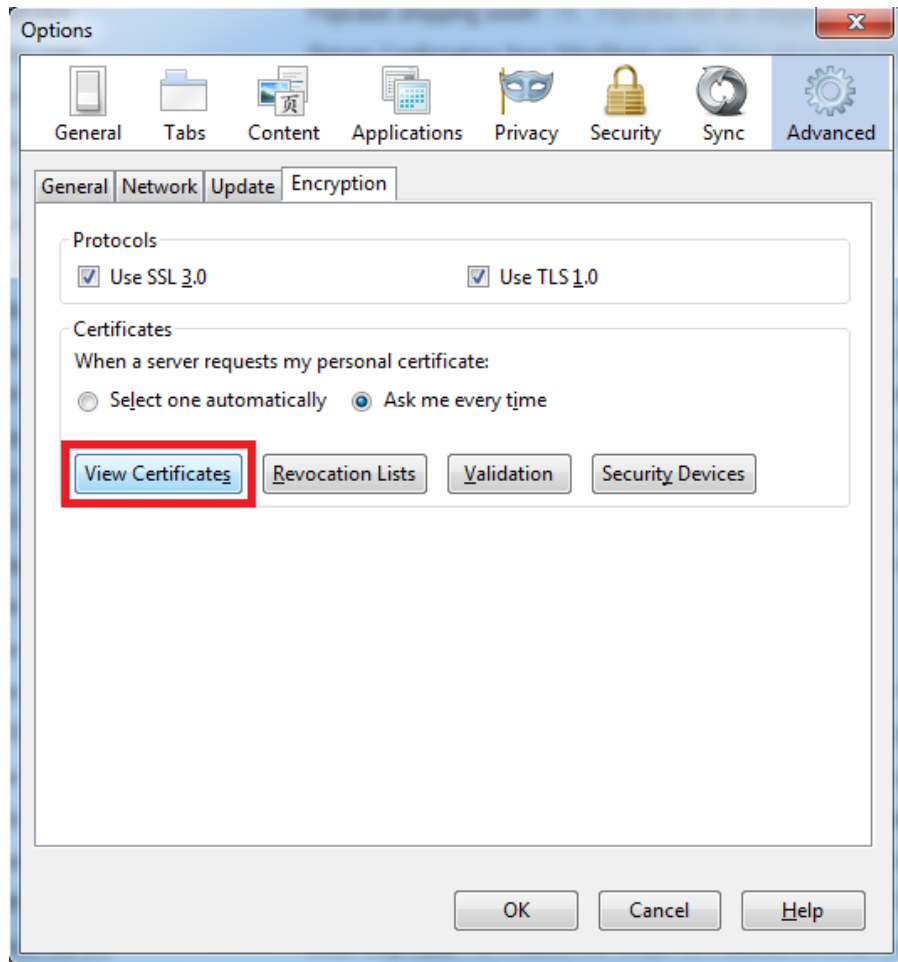
Important: Firefox is a 32bit application. The 32bit version of the acpkcs211.dll file must be loaded. For users with 64bit Windows OS, do not load the dll file under the 64bit folder (C:\Program Files...). You will receive an error message "Unable to load module."

- Click **OK** and the module should load. On the left side, a new device called "ActivClient" will appear. Click **OK** again to close the window.

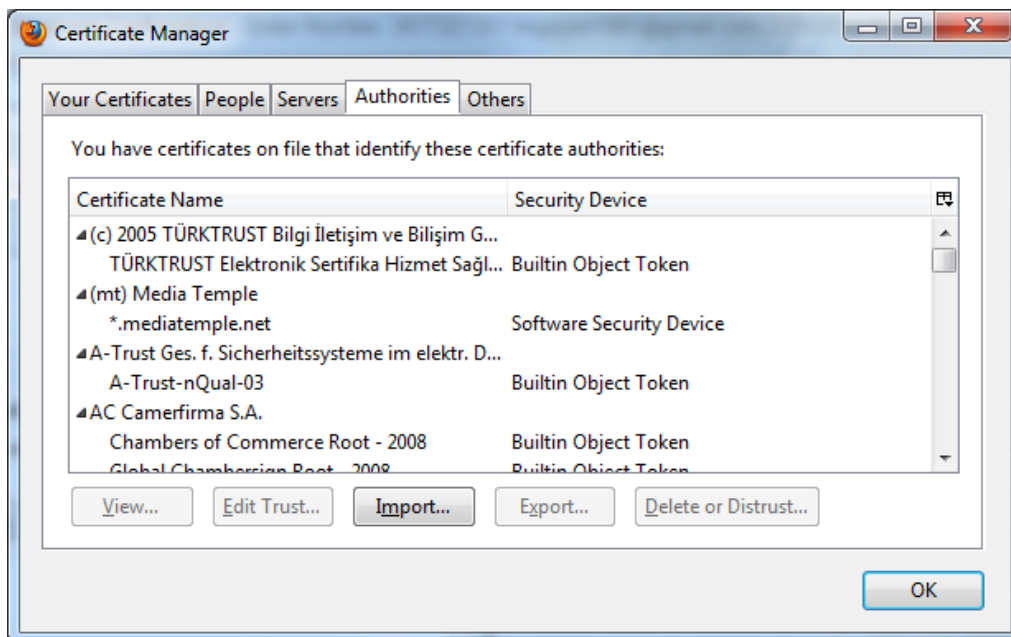


Import Root CA and Intermediate certificates in Firefox

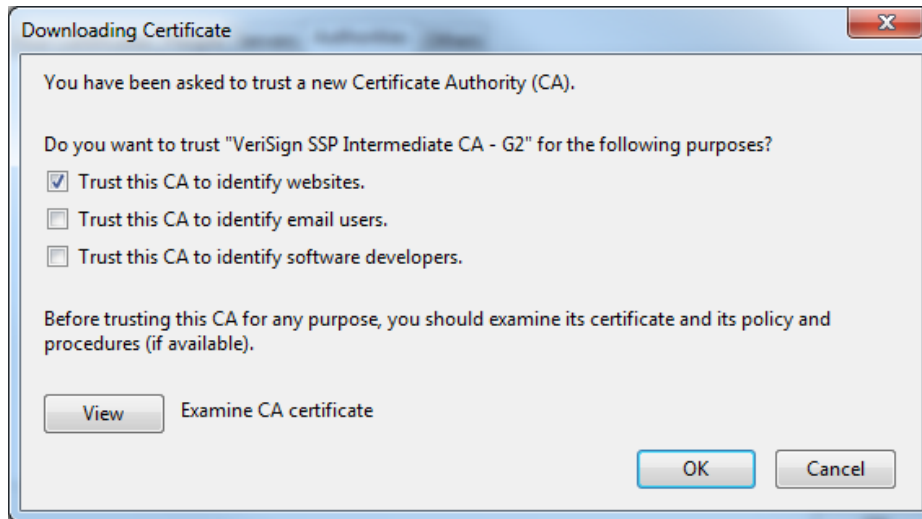
- At the Encryption tab, click the **View Certificates**



- Select the **Authorities** tab.



- Click the **Import** button.
- Locate the root CA exported from the instructions earlier, select the file, and click **Open**.
- Check the box for “Trust this CA to identify websites.” and click **OK**.



- Repeat the previous steps to import all intermediate certificates in the certificate chains.